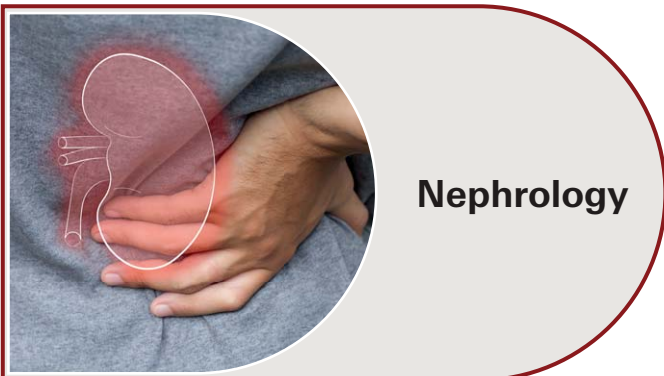
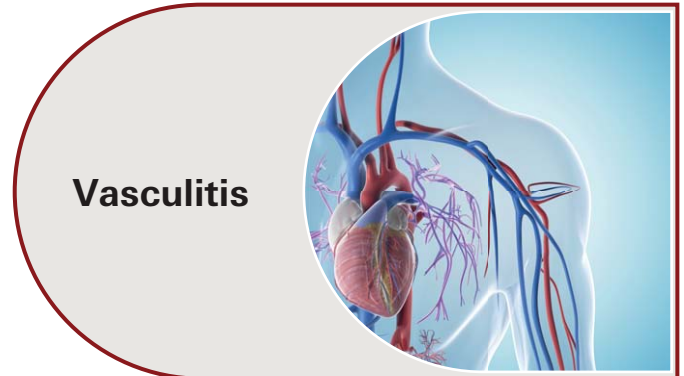




# Testsystems for autoantibody detection





## Rheumatology

### Collagenoses/Connective tissue diseases

Antibodies against	ELISA	Blot	IIFT	ChLIA
Cell components (ANA)	■	■	□	□
Extractable nuclear antigens (ENA)	■	■	□	□
nRNP/Sm (U1-snRNP)	■	■	■	■
RNP70, A, C		■	□	
Sm	■	■	■	■
SS-A (Ro, 60 kDa)	■	■	■	■
Ro-52	□	■		■
SS-B (La)	■	■	■	■
Scl-70	■	■	■	■
Jo-1	■	■	■	■
Ribosomal P-proteins	■	■	□	
Centromeres (CENP A)		■	□	
Centromeres (CENP B)	■	■	□	■
PM-Scl75		■	□	
PM-Scl100	■	■	□	
ssDNA	■		□	
dsDNA	■	■	■	■
Histones	■	■	□	
Nukleosomes	■	■	□	
Proliferating cell nuclear antigens (PCNA, Cyclin 1)	□	■	□	
Mitotin (CENP-F)			□	
Ku		■	□	
Mi-2α, Mi-2β		■	□	
Signal recognition particle (SRP)		■	□	
PL-7, PL-12, EJ, OJ		■	□	
<b>NEW!</b> Ha, Ks, Zo		■	□	
Nuclear vasolin-containing protein-like (NVL)		■		
Platelet-derived growth factor receptor (PDGFR)		■		
Th/To		■		
NOR-90		■	□	
Fibrillarin		■	□	
RNA polymerase III (RP155, RP11)		■	□	

■ Positive reaction in monospecific tests (IIFT: specific pattern, purified antigens – EUROPLUS, cell-based assay)  
 □ Positive reaction in screening assay



Antibodies against	ELISA	Blot	IIFT	ChLIA
Transcription intermediary factor-1 gamma (TIF1γ)		■	□	
Melanoma differentiation antigen 5 (MDA5)		■		
Nuclear matrix protein 2 (NXP2)		■		
SUMO-1 activating enzyme (SAE1)		■		
Cytosolic 5'-nucleotidase 1A (cN-1A)	■	■		
Circulating immune complexes (CIC-C1q)	■			
DFS70	■	■	□	

## Rheumatoid arthritis

Antibodies against	ELISA	Blot	IIFT	ChLIA
Cyclic citrullinated peptides (CCP)	■			■
Rheumatoid factor (RF)	■			■*
Sa	■			
Citrullinated alpha-enolase peptide 1 (CEP-1)	■			

## Antiphospholipid syndrome (APS)

Antibodies against	ELISA	Blot	IIFT	ChLIA
Cardiolipin	■			■
β2-glycoprotein 1	■			■
Phosphatidylserine	■			



## Vasculitis/Nephrology

Antibodies against	ELISA	Blot	IIFT	ChLIA
Granulocyte cytoplasm (ANCA)			■	
Proteinase 3 (PR3)	■	■	■	■
Myeloperoxidase (MPO)	■	■	■	■
Elastase	■		□	
Cathepsin G	■		□	
Bactericidal permeability-increasing protein (BPI)	■		□	
Lactoferrin	■		□	
Lysozyme			□	
Glomerular basement membrane (GBM)	■	■	■	■
Phospholipase A2 receptor (PLA2R)	■		■	■
Thrombospondin type-1 domain-containing 7A (THSD7A)			■	

■ Positive reaction in monospecific tests (IIFT: specific pattern, purified antigens – EUROPLUS, cell-based assay)

□ Positive reaction in screening assay

\* Manufactured by DiAgam



## Gastroenterology

### Autoimmune gastritis/Pernicious anaemia

Antibodies against	ELISA	Blot	IIFT	ChLIA
Parietal cells (PCA)	■	■	■	
Intrinsic Factor (IF)	■	■	■	
Parietal cell antigen ATP4B (beta-subunit of H <sup>+</sup> /K <sup>+</sup> -ATPase)	■			

### Coeliac disease (gluten-sensitive enteropathy)

Antibodies against	ELISA	Blot	IIFT	ChLIA
Deamidated gliadin (GAF-3X)	■	■	■	■
Endomysium (EmA)			■	
Tissue transglutaminase (tTG)	■	■		■

### Chronic inflammatory bowel diseases

Antibodies against	ELISA	Blot	IIFT	ChLIA
Pancreas acini (CUZD1 and GP2)			■	
Intestinal goblet cells (BAk)			■	
Saccharomyces cerevisiae	■	■	■	
pANCA (granulocytes)			■	



## Hepatology

Antibodies against	ELISA	Blot	IIFT	ChLIA
Smooth muscles (ASMA, type actin)		■	■	
Soluble liver antigen/liver-pancreas antigen (SLA/LP)	■	■	■	
Cytosolic liver antigen type 1 (LC-1)	■	■	□	
Liver-kidney microsomes (LKM-1)	■	■	■	■
AMA-M2	■	■	■	■
AMA-M4		■	□	

■ Positive reaction in monospecific tests (IIFT: specific pattern, purified antigens – EUROPLUS, cell-based assay)  
 □ Positive reaction in screening assay



Antibodies against	ELISA	Blot	IIFT	ChLIA
AMA-M9		■	□	
Nuclear Dots			■	
Sp100		■	□	
PML		■	□	
Nuclear membrane			■	
gp210		■	□	
p62			□	
Lamins			□	
pANCA (granulocytes)			■	



## Endocrinology

### Diabetes

Antibodies against	ELISA	Blot	IIFT	ChLIA
Pancreas islets (ICA)			■	
Glutamic acid decarboxylase (GAD)	■		□	
Tyrosine phosphatase (IA2)	■		□	
Zinc transporter 8 (ZnT8)	■		□	

### Thyroid diseases

Antibodies against	ELISA	Blot	IIFT	ChLIA
Thyroid peroxidase (TPO)	■		□	■
Thyroglobulin (TG)	■		■	■
TSH receptor (thyrotropin receptor)	■			

### Polyendocrinopathy/Infertility

Antibodies against	ELISA	Blot	IIFT	ChLIA
Adrenal cortex			□	
Ovary			■ *	
Spermatozoa			■ *	

■ Positive reaction in monospecific tests (IIFT: specific pattern, purified antigens – EUROPLUS, cell-based assay)

□ Positive reaction in screening assay

\* Available with CE marking according to EU Directive 98/79/EC until 26 May 2027



## Neurology

### Paraneoplastic syndrome

Antibodies against	ELISA	Blot	IIFT	ChLIA
Hu (ANNA-1)		■	■	
Yo (PCA-1)		■	■	
Ri (ANNA-2)		■	■	
Amphiphysin		■	■	
CV2 (CRMP5)		■	■	
Ma (Ma1, Ma2/Ta)		■	■	
PCA-2			□	
Tr (DNER)		■	■	
ITPR1			□	
CARP			□	
SOX1		■	■	
Glutamic acid decarboxylase (GAD)	■	■	■	
Titin		■	□	
Recoverin		■	□	
Zic4		■	■	

### Receptors and membrane proteins

Antibodies against	ELISA	Blot	IIFT	ChLIA
Aquaporin-4 (NMO-IgG)			■	
Myelin oligodendrocyte glycoprotein (MOG)			■	
Glutamate receptors (types NMDA and AMPA)			■	
GABA <sub>B</sub> receptors			■	
VGKC associated proteins (LGI1, CASPR2)			■	
DPPX			■	
IgLON5			■	

IIFT for detection of autoantibodies against GABA<sub>A</sub>-Rezeptor, mGluR1, mGluR5 and flotillin-1/2 available for research use only, not for in vitro diagnostic use

- Positive reaction in monospecific tests (IIFT: specific pattern, purified antigens – EUROPLUS, cell-based assay)
- Positive reaction in screening assay



## Other parameters

Antibodies against	ELISA	Blot	IIFT	ChLIA
Gangliosides (GM1, GM2, GM3, GD1a, GD1b, GT1b, GQ1b)		■		
Myelin			■	
Myelin-associated glycoprotein (MAG)			■	
Hippocampus			■	
Cerebellum			■	
Peripheral nerves			■	
Striated muscles			■	
Acetylcholine receptor	■		■	
Muscle-specific tyrosine kinase (MuSK)			■	

IIFT for detection of autoantibodies against Purkinje cells, Adenylate kinase 5 (AK5), CASPR1, contactin 1, neurofascin 155 and neurofascin 186 available for research use only, not for in vitro diagnostic use

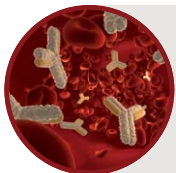


## Dermatology

Antibodies against	ELISA	Blot	IIFT	ChLIA
Epidermal basement membrane (EBM)			■	
BP180	■		■	
BP230	■		■	
Desmosomes			■	
Desmoglein 1	■		■	
Desmoglein 3	■		■	
Envoplakin	■		□	
Salt-split skin			■	
Transitional epithelium			■	
Collagen type VII	■		■	
Laminin 332			■	
Tissue transglutaminase (tTG)	■			

IIFT for detection of autoantibodies against LAMB4 available for research use only, not for in vitro diagnostic use

- Positive reaction in monospecific tests (IIFT: specific pattern, purified antigens – EUROPLUS, cell-based assay)
- Positive reaction in screening assay



**Further specific IIFT substrates for autoantibody  
detection available on request**