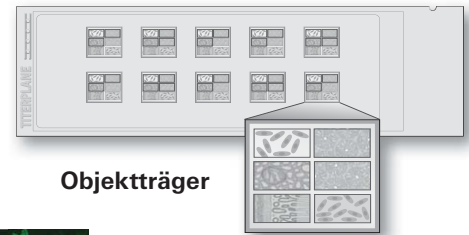
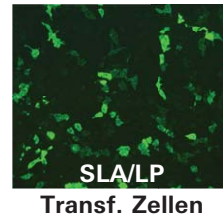
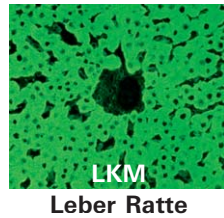
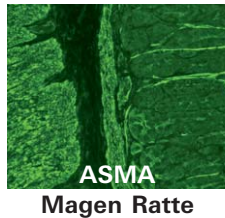
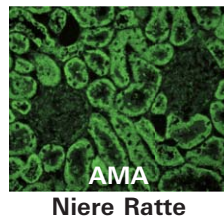
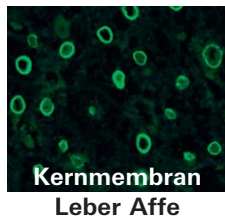




Serologie der Autoimmunhepatitis und primär biliären Cholangitis

IIFT



Kombination
der BIOCHIPS

Leber-Mosaik

ELISA

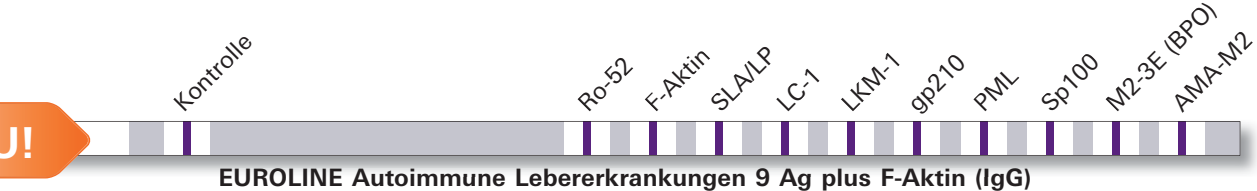
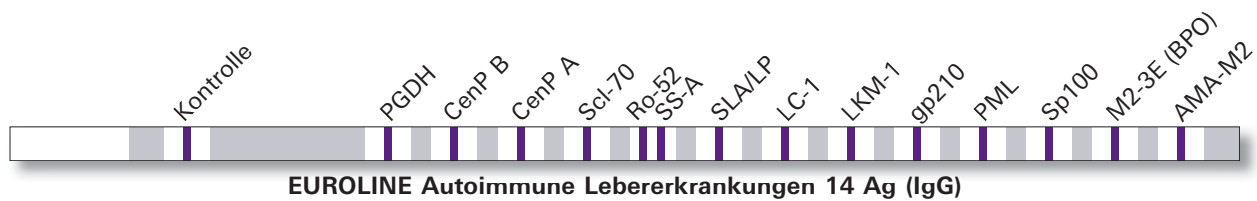
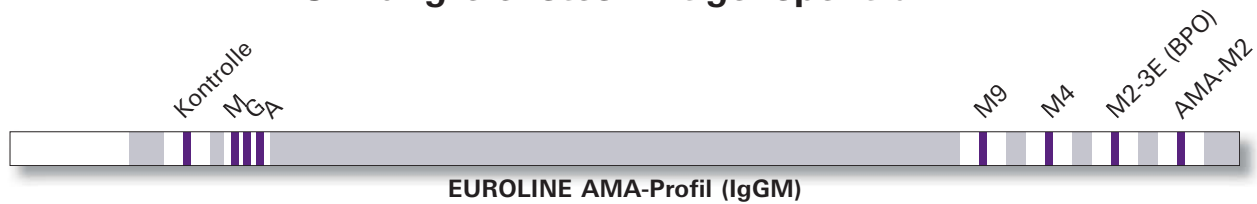
- Anti-LC-1
- Anti-LKM-1
- Anti-SLA/LP
- Anti-M2-3E



14% sensitiver als
herkömmliche Anti-M2-ELISA

IMMUNBLOT

Umfangreichstes Antigenespektrum



NEU!